

DH-SD29204S-GN(-W)

2Mp Full HD Network Mini IR PTZ Dome Camera



Features

- 4x optical zoom
- H.264 & MJPEG dual-streams encoding
- Max. 25/30fps@1080P(1920×1080) & 50/60fps@720P resolution
- DWDR, Day/Night(ICR), Ultra DNR, Auto iris, Auto focus
- Multiple network monitoring: Web viewer, CMS(DSS/PSS) & DMSS
- Max 100°/s pan speed
- Up to 300 presets, 5 auto scan, 8 tour, 5 pattern
- Support intelligent 3D positioning with DH-SD protocol
- Micro SD memory, Built-in Mic, POE/ Wifi optional
- IR Distance up to 30m

DH-SD29204S-GN(-W)

Technical Specifications

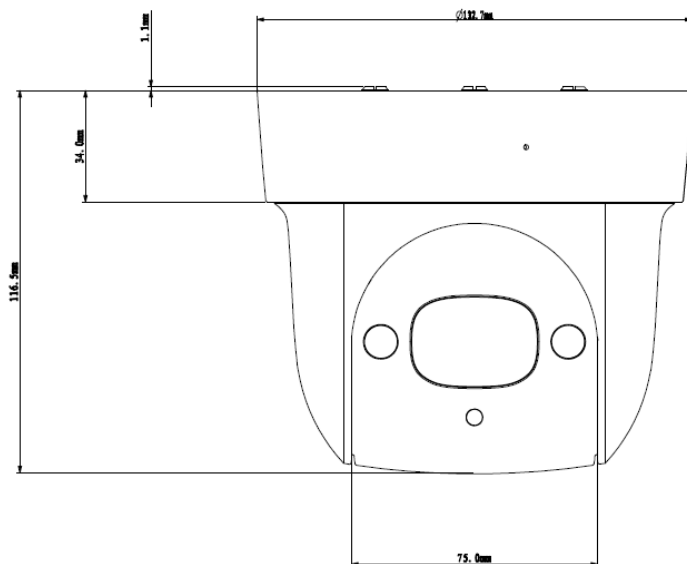
Model		DH-SD29204S-GN	DH-SD29204S-GN-W
Camera			
Image Sensor		1/2.8" CMOS	
Effective Pixels		1920(H) x 1080(V), 2Megapixels	
Scanning System		Progressive	
Electronic Shutter Speed		1/1 ~ 1/30,000s	
Min. Illumination		Color: 0.05Lux@F1.6; B/W: 0.005Lux@F1.6	
S/N Ratio		More than 50dB	
Camera Features			
Day/Night		Auto(ICR) / Color / B/W	
Backlight Compensation		BLC / HLC / DWDR (Digital WDR)	
White Balance		Auto, ATW, Indoor, Outdoor, Manual	
Gain Control		Auto / Manual	
Noise Reduction		Ultra DNR (2D/3D)	
Privacy Masking		Up to 24 areas	
Digital Zoom		16x	
Lens			
Focal Length		2.7mm~11mm(4x Optical zoom)	
Max Aperture		F1.6~ F2.8	
Focus Control		Auto / Manual	
Angle of View		H: 112.5° ~ 39°	
PTZ			
Pan/Tilt Range		Pan: 0° ~ 360° limited; Tilt: 0° ~ 90°, auto flip 180°	
Manual Control Speed		Pan: 0.1° ~100° /s; Tilt: 0.1° ~60° /s	
Preset Speed		Pan: 100° /s; Tilt: 60° /s	
Preset		300	
PTZ Mode		5 Pattern, 8 Tour, Auto Pan, Auto Scan	
Speed Setup		Human-oriented focal length/ speed adaptation	
Power up Action		Auto restore to previous PTZ and lens status after power failure	
Idle Motion		Activate Preset/ Pan/ Scan/ Tour/ Pattern if there is no command in the specified period	
IR Distance		30m	
Video			
Compression		H.264 / MJPEG	
Resolution		1080P(1920×1080)/ 720P(1280×720) / D1(704×576/ 704×480) /CIF (352×288/352×240)	
Frame Rate	Main Stream	1080P(1 ~ 25/30fps)/ 720P (1 ~ 50/60fps)	
	Sub Stream	D1/CIF(1 ~ 25/30fps)	
Bit Rate		H.264: 448K ~ 8192Kbps, MJPEG: 5120K ~ 10240Kbps	
Audio			

DH-SD29204S-GN(-W)

Compression	G.711a / G.711Mu(32kbps)/ PCM(128kbps)	
Interface	Built-in Mic	
Network		
Ethernet	RJ-45 (10/100Base-T)	
WIFI	N/A	Support
Protocol	IPv4/ IPv6, HTTP, HTTPS, SSL, TCP/IP, UDP, UPnP, ICMP, IGMP, SNMP, RTSP, RTP, SMTP, NTP, DHCP, DNS, PPPOE, DDNS, FTP, IP Filter, QoS, Bonjour, 802.1x	
ONVIF	ONVIF Profile S	
Max. User Access	20 users	
Smart Phone	iPhone, iPad, Android, Windows Phone	
Auxiliary Interface		
Memory Slot	Micro SD, Max 64GB	
General		
Power Supply	DC12V, POE	DC12V
Power Consumption	10W, 13W (IR on)	
Working Environment	-30°C ~ 60°C / Less than 90% RH	
Dimensions	Φ132.7 (mm) x 116.5 (mm)	
Weight	0.95kg	

DH-SD29204S-GN(-W)

Dimensions



Accessories (Optional)

	
DH-PFA103	DH- PFB302S

Dahua Technology Co., Ltd.

1199 BinAn Road, Binjiang District, Hangzhou, China

Tel: +86-571-87688883

Fax: +86-571-87688815

Email: overseas@dahuatech.com

www.dahuasecurity.com

*Design and specifications are subject to change without notice.

© 2014 Dahua Technology