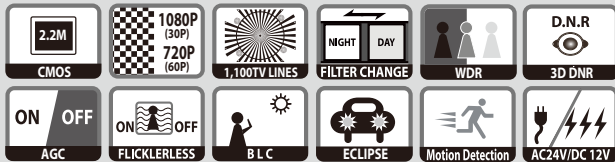


# HD-SDI Full HD Mega Pixel Camera

## 2.2M IR Bullet Mega Pixel Camera

AVIR-HD66VAHD (DC 12V / AC 24V)



### FEATURES

- 2.2M 1080P Full HD with Panasonic CMOS
- Progressive Scanning System
- Resolution : Max. 1,100 TV Lines
- BT 1120 digital Output
- Day & Night (ICR)
- Wide Dynamic Range
- Digital Noise Reduction
- Privacy Mask Function
- On Screen Display
- RS485
- Multi protocol support
- Intelligent motion detection
- Intelligent object detection
- Built-in IR LED 68pcs  
(Night View Distance : Indoor 70m / Outdoor 60m)

### DIGITAL ZOOM IMAGE



### SPECIFICATIONS

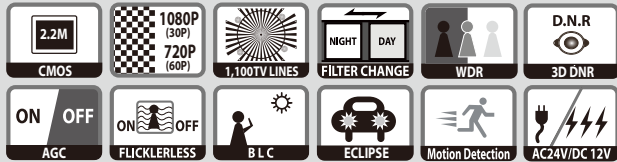
	AVIR-HD66VAHD
Image Sensor	1/3" Panasonic CMOS
Total pixels	2010(H) x 1108(V) = 2,227,080
Active pixels	1944(H) x 1092(V) = 2,122,848
Scanning system	Progressive
Resolution	Digital : 1080P(30P) , 720P(60P) / Analog : 750TV lines
Min. illumination	Color : 1.0Lux, BW : 0.5Lux, Color DSS : 0.002Lux, BW DSS : 0.0008Lux
Video output	Digital : BT.1120, HD-SDI / Analog : 1.0Vp-p(75 ohm, composite)
S/N ratio	More than 50dB(AGC off)
Gain Control	0~20
Shutter Speed	1/30 ~ 1/30,000 / 1/25 ~ 1/30,000
Digital Shutter Speed	Off / x2 / x3 / x4
Brightness	0~20steps
WDR/BLC	Off / WDR / BLC
Day&Night	Auto / Ext / Day / Night
DNR	Off / LOW / MIDDLE / HIGH
Mirror	Off / H / V / H+V
Sharpness	Off / On
E.Zoom	0~x32
Privacy Mask	Off / 28positions
Motion Detection	Off / 8positions
Comm.	Baud rate : 2400 / 4800 / 9600 / 19200 / 38400 / 57600
IR LED	68 Units 850nm Infrared LED, 20,000hrs
Night View Distance	Indoor 70m / Outdoor 60m
Lens	2.8~12mm Megapixel Varifocal lens
Power Source	DC 12V / AC 24V ± 10%
Power consumption	DC 12V 900mA / AC 24V 350mA
Power Input	Connector
Video Output	Connector
Cable	5C-2V (Max. Distance 120m)
Dimension(mm)	94(∅) x 156(L)
Weight	approx 1.66Kg

Design and specifications are subject to change with notice.

# HD-SDI Full HD Mega Pixel Camera

## 2.2M IR Bullet Mega Pixel Camera

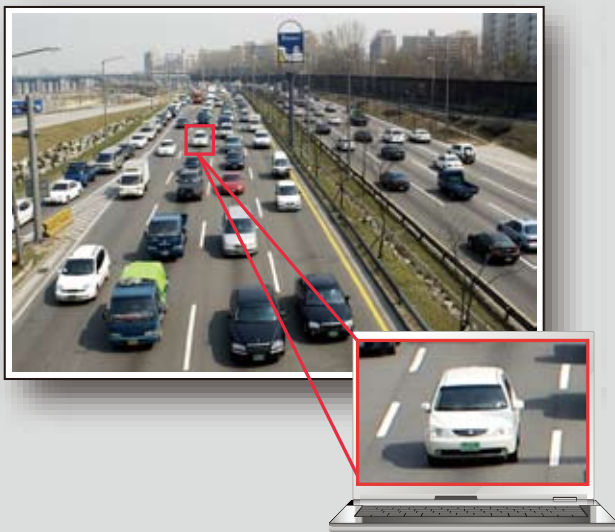
AVIR-HD40VAHD (DC 12V / AC 24V)



### FEATURES

- 2.2M 1080P Full HD with Panasonic CMOS
- Progressive Scanning System
- Resolution : Max. 1,100 TV Lines
- BT 1120 digital Output
- Day & Night (ICR)
- Wide Dynamic Range
- Digital Noise Reduction
- Privacy Mask Function
- On Screen Display
- RS485
- Multi protocol support
- Intelligent motion detection
- Intelligent object detection
- Built-in IR LED 40pcs  
(Night View Distance : Indoor 60m / Outdoor 50m)

### DIGITAL ZOOM IMAGE



### SPECIFICATIONS

	AVIR-HD40VAHD
Image Sensor	1/3" Panasonic CMOS
Total pixels	2010(H) x 1108(V) = 2,227,080
Active pixels	1944(H) x 1092(V) = 2,122,848
Scanning system	Progressive
Resolution	Digital : 1080P(30P) , 720P(60P) / Analog : 750TV lines
Min. illumination	Color : 1.0Lux, BW : 0.5Lux, Color DSS : 0.002Lux, BW DSS : 0.0008Lux
Video output	Digital : BT.1120, HD-SDI / Analog : 1.0Vp-p(75 ohm, composite)
S/N ratio	More than 50dB(AGC off)
Gain Control	0~20
Shutter Speed	1/30 ~ 1/30,000 / 1/25 ~ 1/30,000
Digital Shutter Speed	Off / x2 / x3 / x4
Brightness	0~20steps
WDR/BLC	Off / WDR / BLC
Day&Night	Auto / Ext / Day / Night
DNR	Off / LOW / MIDDLE / HIGH
Mirror	Off / H / V / H+V
Sharpness	Off / On
E.Zoom	0~x32
Privacy Mask	Off / 28positions
Motion Detection	Off / 8positions
Comm.	Baud rate : 2400 / 4800 / 9600 / 19200 / 38400 / 57600
IR LED	40 Units 850nm Infrared LED, 20,000hrs
Night View Distance	Indoor 60m / Outdoor 50m
Lens	2.8~12mm Megapixel Varifocal lens
Power Source	DC 12V / AC 24V ± 10%
Power consumption	DC 12V 600mA / AC 24V 260mA
Power Input	Connector
Video Output	Connector
Cable	5C-2V (Max. Distance 120m)
Dimension(mm)	74.5(φ) x 151(L)
Weight	approx 1.2Kg

Design and specifications are subject to change with notice.

# HD-SDI Full HD Mega Pixel Camera

## 2.2M IR Dome Mega Pixel Camera

AVDIR-HD70VAHD (DC 12V / AC 24V)



**2.3M 1080P**

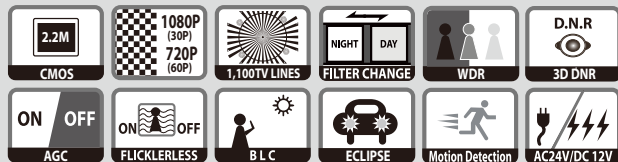
**1,100TVL**

**3D DNR**

**WDR**

**IP 67**

**Heater/Blower**  
(Only AC Power)-Option



### INSTALLATION ACCESSORIES



### FEATURES

- 2.2M 1080P Full HD with Panasonic CMOS
- Progressive Scanning System
- Resolution : Max. 1,100 TV Lines
- BT 1120 digital Output
- Day & Night (ICR)
- Wide Dynamic Range
- Digital Noise Reduction
- Privacy Mask Function
- On Screen Display
- RS485
- Multi protocol support
- Intelligent motion detection
- Intelligent object detection
- Built-in IR LED 35pcs
- (Night View Distance : Indoor 55m / Outdoor 45m)
- Heater & Blower Option Available
- Waterproof (IP67)
- Flush or Surface Mount
- Ceiling & Wall Mount Bracket Available

### DIGITAL ZOOM IMAGE



### SPECIFICATIONS

	AVDIR-HD70VAHD
Image Sensor	1/3" Panasonic CMOS
Total pixels	2010(H) x 1108(V) = 2,227,080
Active pixels	1944(H) x 1092(V) = 2,122,848
Scanning system	Progressive
Resolution	Digital : 1080P(30P) , 720P(60P) / Analog : 750TV lines
Min. illumination	Color : 1.0Lux, BW : 0.5Lux, Color DSS : 0.002Lux , BW DSS : 0.0008Lux
Video output	Digital : BT.1120, HD-SDI / Analog : 1.0Vp-p(75 ohm, composite)
S/N ratio	More than 50dB(AGC off)
Gain Control	0~20
Shutter Speed	1/30 ~ 1/30,000 / 1/25 ~ 1/30,000
Digital Shutter Speed	Off / x2 / x3 / x4
Brightness	0~20steps
WDR/BLC	Off / WDR / BLC
Day&Night	Auto / Ext / Day / Night
DNR	Off / LOW / MIDDLE / HIGH
Mirror	Off / H / V / H+V
Sharpness	Off / On
E.Zoom	0~x32
Privacy Mask	Off / 28positions
Motion Detection	Off / 8positions
Comm.	Baud rate : 2400 / 4800 / 9600 / 19200 / 38400 / 57600
IR LED	35 Units 850nm Infrared LED, 20,000hrs
Night View Distance	Indoor 55m / Outdoor 45m
Lens	2.8~12mm Megapixel Varifocal lens
Power Source	DC 12V / AC 24V ± 10%
Power consumption	DC 12V 600mA / AC 24V 260mA
Power Input	Connector
Video Output	Connector
Cable	5C-2V (Max. Distance 120m)
Dimension(mm)	178(∅) x 113(H)
Weight	approx 1.2Kg

Design and specifications are subject to change with notice.