

650 TVL IR Bullet Camera



 **AVICO**

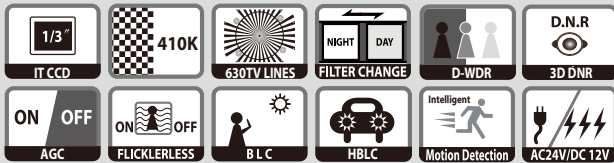
Smart IR Bullet Camera

3D DNR/D-WDR True Day & Night IR Bullet Camera

630 TVL

AR-MWTD50VAH (DC 12V)

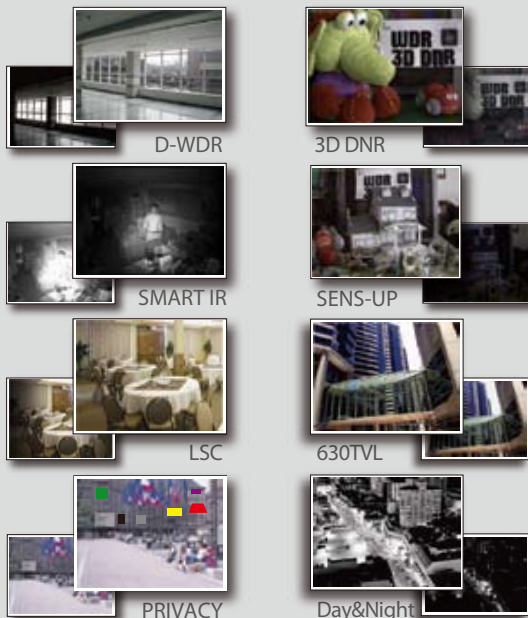
AR-MWTD50VAHD (DC 12V / AC 24V)



FEATURES

- 1/3" IT CCD
- High Resolution 630TV Lines
- SRLED(Main) : 8 units 850nm Infrared LED, 20,000hrs
- SRLED(Sub) : 8+8 units 850nm Infrared LED, 20,000hrs
- Night View Distance : Indoor 110 / Outdoor 100m
- Smart IR Function
- D-WDR
- 3D DNR(Digital Noise Reduction)
- Sens-Up (x1024)
- True Day & Night(ICR)
- Backlight Compensation
- PELCO-D / RS485(Optional)
- Intelligent Motion Detection
- LSC(Lens Shading Compensation)
- Privacy Mask(Polygonal, 8 Colors)
- O.S.D menu function
- Built-in Concealed Cable Bracket
- Waterproof (IP67)

COMPARISON IMAGE



SPECIFICATIONS

	AR-MWTD50VAH	
	NTSC	PAL
TV System	NTSC	PAL
Sensor	1/3" IT CCD	
Total Pixels	(H)811 x (V)508	(H)795 x (V)596
Effective Pixels	(H)768 x (V)494	(H)752 x (V)582
Synchronization	H/V 15.734/59.94Hz	H/V 15.625/50Hz
Scanning System	2:1 Interlace	
Horizontal Resolution	630 TV Lines(Max.) / 700 TV Lines(B/W)	
Min. Illumination	0.12 Lux(15IRE), 0.2Lux(30IRE), 0.4Lux(50IRE) F1.2	
Sens-Up Off	0.0002Lux(15IRE), 0.0005Lux(30IRE), 0.0008Lux(50IRE) F1.2	
Sens-Up On	0.0002Lux(15IRE), 0.0005Lux(30IRE), 0.0008Lux(50IRE) F1.2	
Video Output	1.0Vp-p/75ohm Video 0.71Vp-p	
γ Correction	0.45, 0.5, 0.6, CRT / LCD	
S/N	More than 52dB (AGC off)	
O.S.D	LENS, E-SHUTTER, BACKLIGHT, D-WDR, AGC, SENS-UPWHITE-BALANCE, DAY & NIGHT, H.B.L.C, MOTION, MIRROR, SHARPNESS, GAMMA, DNR, LSC, PRIVACY, COMMUNICATION, TITLE, LANGUAGE, DPC	
Electrical Shutter	1/60~1/100,000	1/50~1/100,000
Privacy Masking	8 Windows(Polygonal, 8 Colors)	
Day & Night	AUTO / DAY / NIGHT / EXT	
Motion Detection	ON / OFF	
Sens-Up(Low Shutter)	AUTO, OFF~x1024	
Language	ENG, CHI	
White Balance	ATW / AWC / MANUAL / PUSH	
D-WDR	ON / OFF (WDR LEVEL)	
Mirror	ON / OFF	
3D-DNR	OFF, LOW, MID, HIGH	
LSC	ON / OFF	
Smart IR	ON / OFF	
Lens	ICR 2.8~12mm DC Auto Iris	
SRLED(Main)	8 units 850nm Infrared LED, 20,000hrs	
SRLED(Sub)	8+8 units 850nm Infrared LED, 20,000hrs	
Night View Distance	Indoor 110m / Outdoor 100m	
Operating Temperature/Humidity	-20℃ ~60℃ / 30% ~80%	
Storage Temperature/Humidity	-30℃ ~60℃ / 20% ~90%	
Power(Max.)	DC	DC 12V, 1,650mA
	DC/AC	DC 12V, 1,700mA / AC24V, 700mA
Dimension(mm)	84(Ø) x 195(L)	

Design and specifications are subject to change with notice.

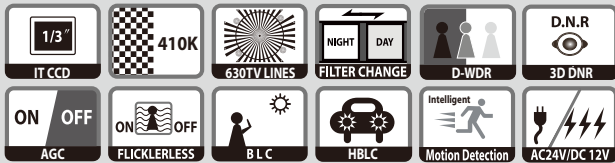
Smart IR Bullet Camera

3D DNR/D-WDR True Day & Night IR Bullet Camera

630 TVL

AL-MWTD50VAH (DC 12V)

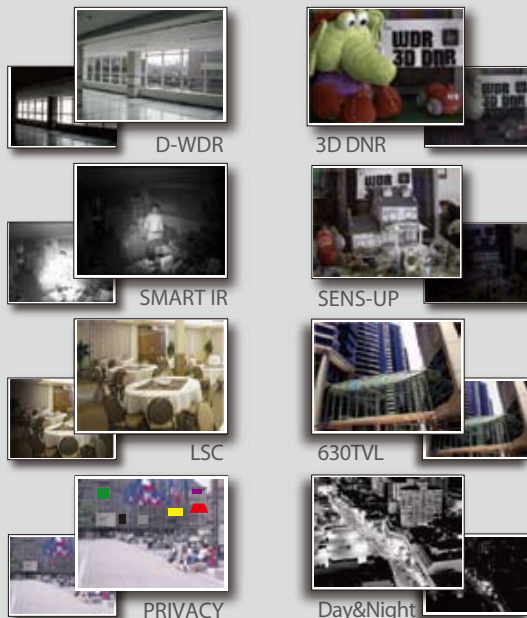
AL-MWTD50VAHD (DC 12V / AC 24V)



FEATURES

- 1/3" IT CCD
- High Resolution 630TV Lines
- SRLED : 8 units 850nm Infrared LED, 20,000hrs
- Night View Distance : Indoor 50 / Outdoor 40m
- Smart IR Function
- D-WDR ■ 3D DNR(Digital Noise Reduction)
- Sens-Up (x1024) ■ True Day & Night(ICR)
- Backlight Compensation
- PELCO-D / RS485(Optional)
- Intelligent Motion Detection
- LSC(Lens Shading Compensation)
- Privacy Mask(Polygonal, 8 Colors)
- O.S.D menu function
- Built-in Concealed Cable Bracket
- Weatherproof (IP67)

COMPARISON IMAGE



SPECIFICATIONS

	AL-MWTD50VAH	
	NTSC	PAL
TV System	NTSC	PAL
Sensor	1/3" IT CCD	
Total Pixels	(H)811 x (V)508	(H)795 x (V)596
Effective Pixels	(H)768 x (V)494	(H)752 x (V)582
Synchronization	H/V 15.734/59.94Hz	H/V 15.625/50Hz
Scanning System	2:1 Interlace	
Horizontal Resolution	630 TV Lines(Max.) / 750 TV Lines(B/W)	
Min. Illumination	Sens-Up Off	0.12 Lux(15IRE), 0.2Lux(30IRE), 0.4Lux(50IRE) F1.2
	Sens-Up On	0.0002Lux(15IRE), 0.0005Lux(30IRE), 0.0008Lux(50IRE) F1.2
Video Output	1.0Vp-p/75ohm Video 0.71Vp-p	
γ Correction	0.45, 0.5, 0.6, CRT / LCD	
S/N	More than 52dB (AGC off)	
O.S.D	LENS, E-SHUTTER, BACKLIGHT, D-WDR, AGC, SENS-UPWHITE-BALANCE, DAY & NIGHT, HBLC, MOTION, MIRROR, SHARPNESS, GAMMA, DNR, LSC, PRIVACY, COMMUNICATION, TITLE, LANGUAGE, DPC	
Electrical Shutter	1/60~1/100,000	1/50~1/100,000
Privacy Masking	8 Windows(Polygonal, 8 Colors)	
Day & Night	AUTO / DAY / NIGHT / EXT	
Motion Detection	ON / OFF	
Sens-Up(Low Shutter)	AUTO, OFF~x1024	
Language	ENG, CHI	
White Balance	ATW / AWC / MANUAL / PUSH	
D-WDR	ON / OFF (WDR LEVEL)	
Mirror	ON / OFF	
3D-DNR	OFF, LOW, MID, HIGH	
LSC	ON / OFF	
Smart IR	ON / OFF	
Lens	ICR 2.8~12mm DC Auto Iris	
SRLED	8 units 850nm Infrared LED, 20,000hrs	
Night View Distance	Indoor 50m / Outdoor 40m	
Operating Temperature/Humidity	-20℃ ~60℃ / 30% ~80%	
Storage Temperature/Humidity	-30℃ ~60℃ / 20% ~90%	
Power(Max.)	DC	DC 12V, 600mA
	DC/AC	DC 12V, 700mA / AC24V, 300mA
Dimension(mm)	84(Ø) x 195(L)	

Design and specifications are subject to change with notice.

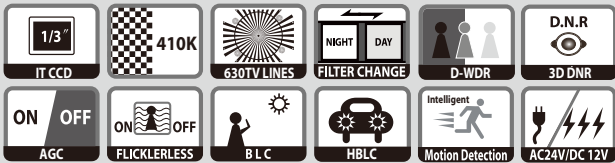
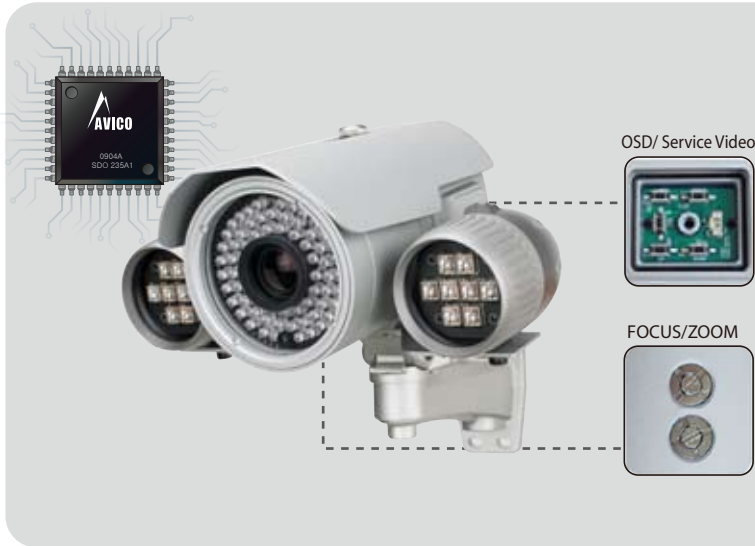
Smart IR Bullet Camera

3D DNR/D-WDR True Day & Night IR Bullet Camera

630 TVL

AR-MWTD66VAH (DC 12V)

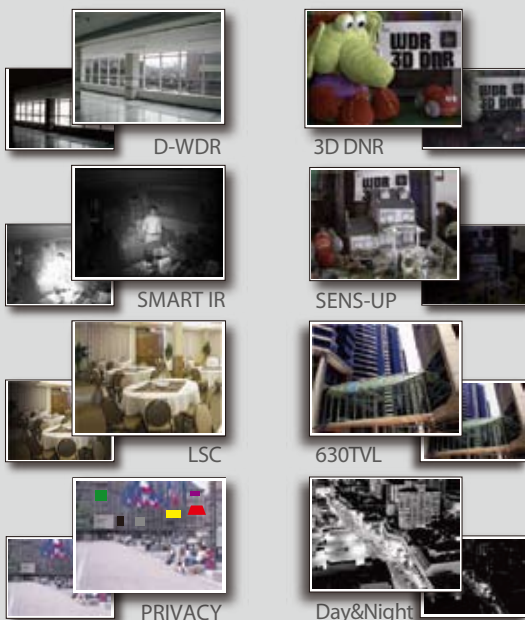
AR-MWTD66VAHD (DC 12V / AC 24V)



FEATURES

- 1/3" IT CCD
- High Resolution 630TV Lines
- IR LED (Main): 68 units 850nm Infrared LED, 20,000hrs
- SRLED(Sub) : 8+8 units 850nm Infrared LED, 20,000hrs
- Night View Distance : Indoor 100 / Outdoor 90m
- External Control : Tele/Wide, Near/Far, O.S.D, Service Video
- Smart IR Function
- D-WDR
- 3D DNR(Digital Noise Reduction)
- Sens-Up (x1024)
- True Day & Night(ICR)
- Backlight Compensation
- PELCO-D / RS485(Optional)
- Intelligent Motion Detection
- LSC(Lens Shading Compensation)
- Privacy Mask(Polygonal, 8 Colors)
- O.S.D menu function
- Built-in Concealed Cable Bracket
- Weatherproof (IP65)

COMPARISON IMAGE



SPECIFICATIONS

	AR-MWTD66VAH	
TV System	NTSC	PAL
Sensor	1/3" IT CCD	
Total Pixels	(H)811 x (V)508	(H)795 x (V)596
Effective Pixels	(H)768 x (V)494	(H)752 x (V)582
Synchronization	H/V 15.734/59.94Hz	H/V 15.625/50Hz
Scanning System	2:1 Interlace	
Horizontal Resolution	630 TV Lines(Max.) / 700 TV Lines(B/W)	
Min. Illumination	Sens-Up Off	0.12 Lux(15IRE), 0.2Lux(30IRE), 0.4Lux(50IRE) F1.2
	Sens-Up On	0.0002Lux(15IRE), 0.0005Lux(30IRE), 0.0008Lux(50IRE) F1.2
Video Output	1.0Vp-p/75ohm Video 0.71Vp-p	
γ Correction	0.45, 0.5, 0.6, CRT / LCD	
S/N	More than 52dB (AGC off)	
O.S.D	LENS, E-SHUTTER, BACKLIGHT, D-WDR, AGC, SENS-UPWHITE-BALANCE, DAY & NIGHT, H.B.L.C, MOTION, MIRROR, SHARPNESS, GAMMA, DNR, LSC, PRIVACY, COMMUNICATION, TITLE, LANGUAGE, DPC	
Electrical Shutter	1/60~1/100,000	1/50~1/100,000
Privacy Masking	8 Windows(Polygonal, 8 Colors)	
Day & Night	AUTO / DAY / NIGHT / EXT	
Motion Detection	ON / OFF	
Sens-Up(Low Shutter)	AUTO, OFF~x1024	
Language	ENG, CHI	
White Balance	ATW / AWC / MANUAL / PUSH	
D-WDR	ON / OFF (WDR LEVEL)	
Mirror	ON / OFF	
3D-DNR	OFF, LOW, MID, HIGH	
LSC	ON / OFF	
Smart IR	ON / OFF	
Lens	ICR 2.8~12mm DC Auto Iris	
IR LED(Main)	68 units 850nm Infrared LED, 20,000hrs	
SRLED(Sub)	8+8 units 850nm Infrared LED, 20,000hrs	
Beam Spread	36° + 56°	
Night View Distance	Indoor 100m / Outdoor 90m	
Operating Temperature/Humidity	-20℃ ~60℃ / 30% ~80%	
Storage Temperature/Humidity	-30℃ ~60℃ / 20% ~90%	
Power(Max.)	DC	DC 12V, 1,800mA
	DC/AC	DC 12V, 1,850mA / AC24V, 750mA
Dimension(mm)	94(Ø) x 156(L)	

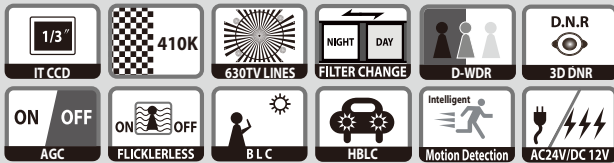
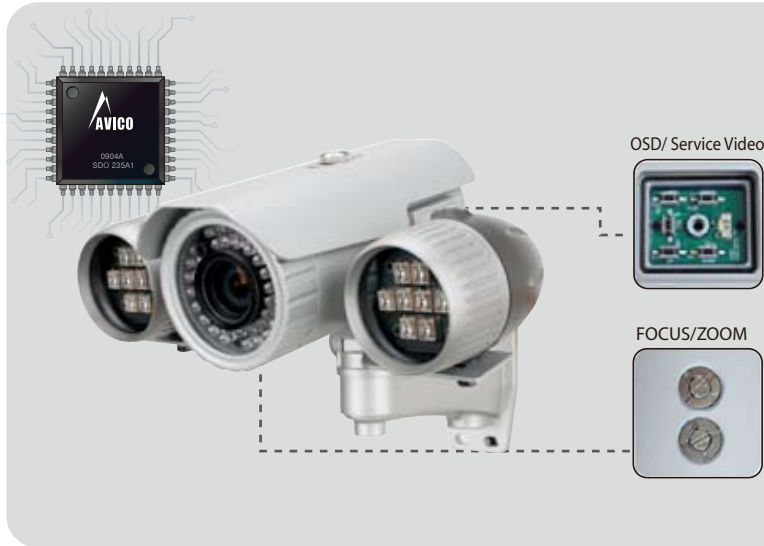
Design and specifications are subject to change with notice.

Smart IR Bullet Camera

3D DNR/D-WDR True Day & Night IR Bullet Camera

630 TVL

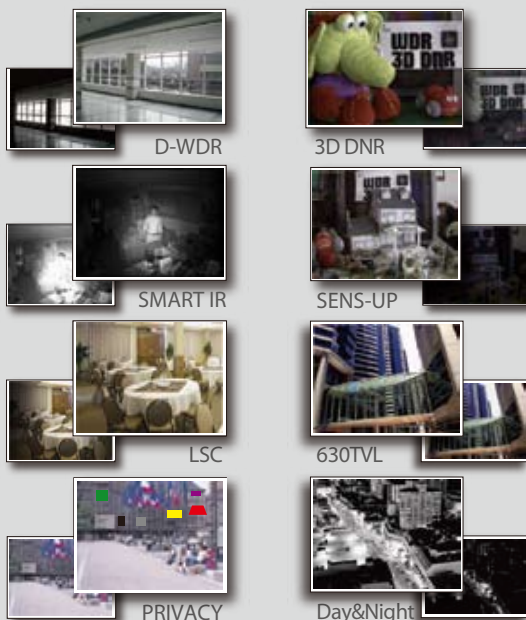
AR-MWTD40VAH (DC 12V)
AR-MWTD40VAHD (DC 12V / AC 24V)



FEATURES

- 1/3" IT CCD
- High Resolution 630TV Lines
- IR LED (Main): 40 units 850nm Infrared LED, 20,000hrs
- SRLLED(Sub) : 8+8 units 850nm Infrared LED, 20,000hrs
- Night View Distance : Indoor 80 / Outdoor 70m
- External Control : Tele/Wide, Near/Far, O.S.D, Service Video
- Smart IR Function
- D-WDR ■ 3D DNR(Digital Noise Reduction)
- Sens-Up (x1024) ■ True Day & Night(ICR)
- Backlight Compensation
- PELCO-D / RS485(Optional)
- Intelligent Motion Detection
- LSC(Lens Shading Compensation)
- Privacy Mask(Polygonal, 8 Colors)
- O.S.D menu function
- Built-in Concealed Cable Bracket
- Weatherproof (IP67)

COMPARISON IMAGE



SPECIFICATIONS

	AR-MWTD40VAH	
	NTSC	PAL
TV System	NTSC	PAL
Sensor	1/3" IT CCD	
Total Pixels	(H)811 x (V)508	(H)795 x (V)596
Effective Pixels	(H)768 x (V)494	(H)752 x (V)582
Synchronization	H/V 15.734/59.94Hz	H/V 15.625/50Hz
Scanning System	2:1 Interlace	
Horizontal Resolution	630 TV Lines(Max.) / 700 TV Lines(B/W)	
Min. Illumination	0.12 Lux(15IRE), 0.2Lux(30IRE), 0.4Lux(50IRE) F1.2	
Sens-Up Off	0.0002Lux(15IRE), 0.0005Lux(30IRE), 0.0008Lux(50IRE) F1.2	
Sens-Up On		
Video Output	1.0Vp-p/75ohm Video 0.71Vp-p	
γ Correction	0.45, 0.5, 0.6, CRT / LCD	
S/N	More than 52dB (AGC off)	
O.S.D	LENS, E-SHUTTER, BACKLIGHT, D-WDR, AGC, SENS-UPWHITE-BALANCE, DAY & NIGHT, H.B.L.C, MOTION, MIRROR, SHARPNESS, GAMMA, DNR, LSC, PRIVACY, COMMUNICATION, TITLE, LANGUAGE, DPC	
Electrical Shutter	1/60~1/100,000	1/50~1/100,000
Privacy Masking	8 Windows(Polygonal, 8 Colors)	
Day & Night	AUTO / DAY / NIGHT / EXT	
Motion Detection	ON / OFF	
Sens-Up(Low Shutter)	AUTO, OFF~x1024	
Language	ENG, CHI	
White Balance	ATW / AWC / MANUAL / PUSH	
D-WDR	ON / OFF (WDR LEVEL)	
Mirror	ON / OFF	
3D-DNR	OFF, LOW, MID, HIGH	
LSC	ON / OFF	
Smart IR	ON / OFF	
Lens	ICR 2.8~12mm DC Auto Iris	
IR LED(Main)	40 units 850nm Infrared LED, 20,000hrs	
SRLLED(Sub)	8+8 units 850nm Infrared LED, 20,000hrs	
Beam Spread	36° + 56°	
Night View Distance	Indoor 80m / Outdoor 70m	
Operating Temperature/Humidity	-20℃ ~60℃ / 30% ~80%	
Storage Temperature/Humidity	-30℃ ~60℃ / 20% ~90%	
Power(Max.) DC	DC 12V, 1,500mA	
DC/AC	DC 12V, 1,600mA / AC24V, 650mA	
Dimension(mm)	74.5(Ø) x 151(L)	

Design and specifications are subject to change with notice.